

# INSTITUTIONAL RESEARCH

Spring 2019 Student Evaluations of Faculty (SEFs) will begin **April 15 at 8:00 a.m.**

## Check out the SEF Portal

You can now go into the SEF portal to adjust your evaluation window (this is optional and will be opened for editing until at least one student has submitted a response for your class).

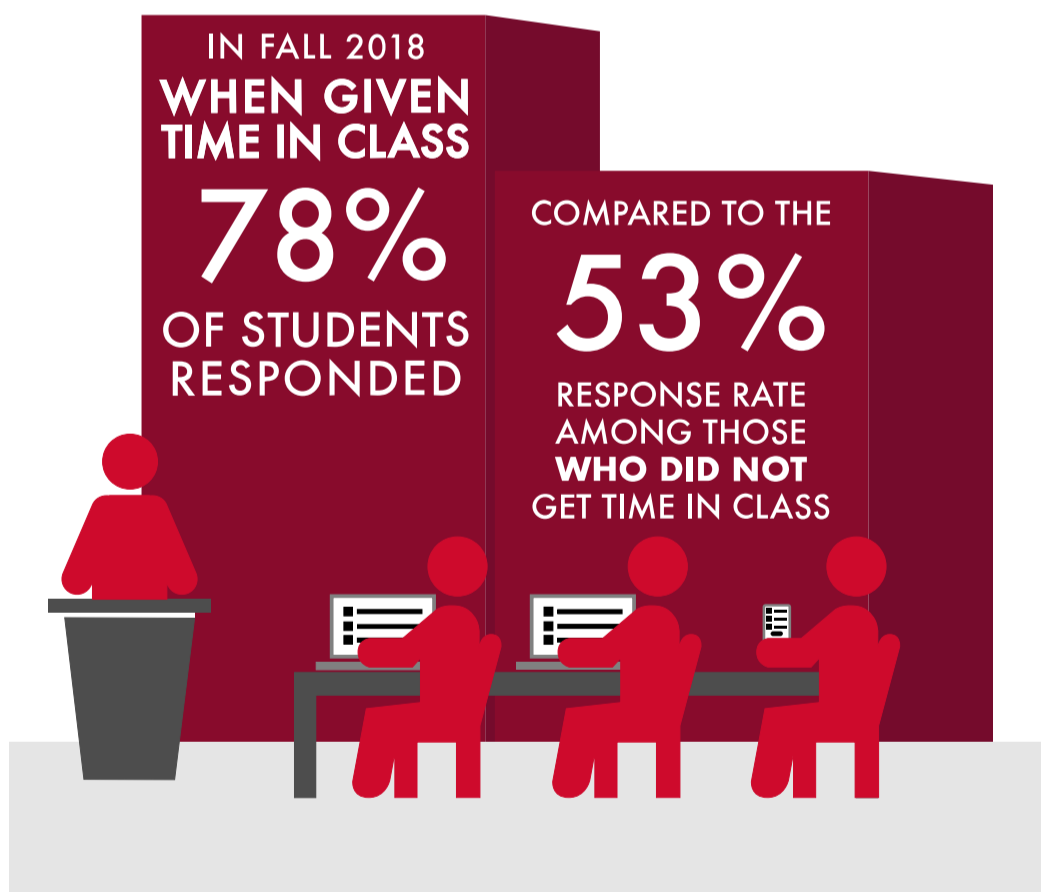
Students will have until **May 10th 11:59 p.m.** to complete any open surveys.

## SEF link: [www.csun.edu/SEF](http://www.csun.edu/SEF)

You will need to give the SEF URL above to your students and inform them when they should log into the system and begin evaluations.

## Wondering how you can get better response rates?

The best advice is to give students time in class to complete the survey.



NOTE: SEF survey can be accessed from any internet-capable device, including smartphones, tablets, and laptops.

Want to learn more about SEFs?

[Visit the SEF Resources Page](#)

Questions?

Email Candice Liu in the office of Institutional Research at [candiceliu@csun.edu](mailto:candiceliu@csun.edu)