

## INSTITUTIONAL RESEARCH

# 5 Year Trends for CSUN's First-Time Freshmen

Selected findings from the 2011-2015 CIRP Freshman Survey

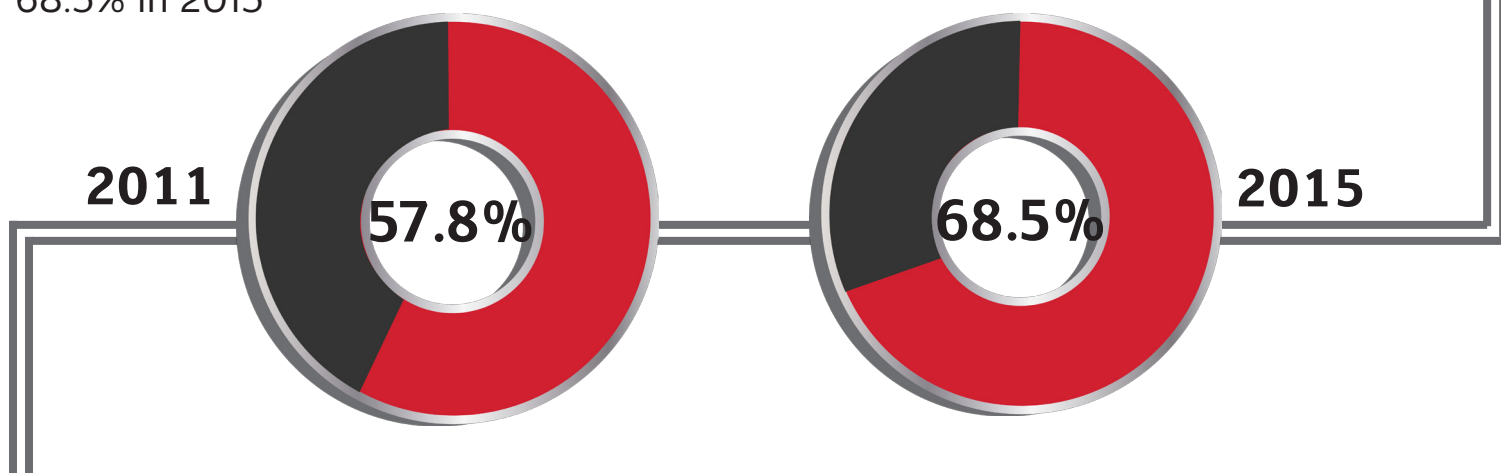
Over the past 5 administrations of the Freshman Survey,

# 21,138

new freshmen at CSUN have completed the Freshman Survey during orientation. This represents 80% of all freshmen from the last 5 years.

## What has changed about our freshmen?

The percentage of Latina/o students has increased steadily from 57.8% in 2011 to 68.5% in 2015

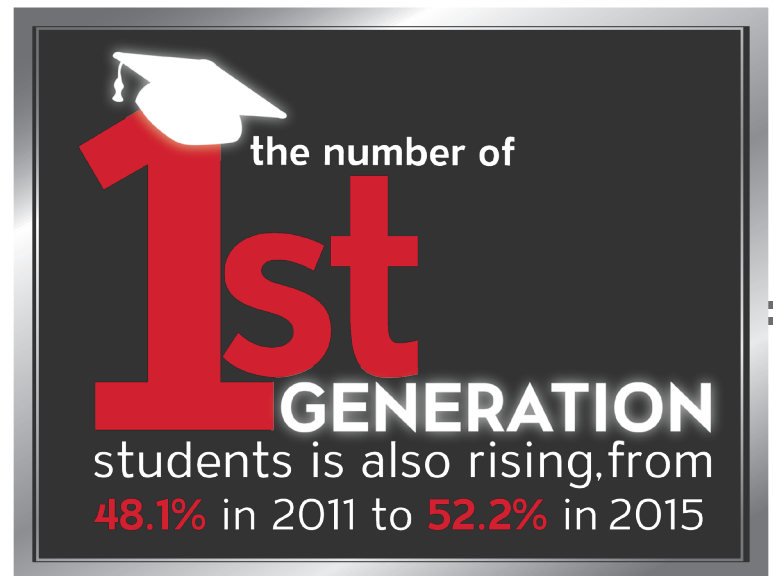


# What has changed in the last 5 years?

## Student's Financial Situations

As we recover from the most recent recession, the number of freshmen who spent more than 5 hours per week working for pay during their last year in high school rose from 21.6% in 2011 to 33.9% in 2015.

Our students are also increasingly independent, with the number of students expecting to rely on family resources to fund their education falling from 72.4% in 2011 to 57.5% in 2015.



## ACCEPTANCE OF DIVERSITY IS ON THE RISE

CSUN students report an **above average ability to work cooperatively** with diverse people. This has grown from **76.9%** in 2011 to **84.5%** in 2015.

## THE NUMBER OF FRESHMEN WHO smoked cigarettes

IN HIGH SCHOOL HAS STEADILY **DECREASED**,

**10.4%** → **4.9%**  
in 2011 in 2015



# What has remained stable?

\*Percentages in this section represent a 5-year average, where year-to-year fluctuations were less than 2% in either direction.

## Household Income

This has remained low but stable during the last five years, with the percentage of families earning below \$30,000 per year holding at about 45%.



**Consistently, about 75% of students rate themselves as having above average drive to achieve.**

**During this period, incoming freshmen continued to report focusing on:**

- about 90% of our CSUN freshmen spent time studying with other students.
- about 80% of our freshmen performed volunteer work.
- about 60% of our freshmen spent time tutoring other students.



For more information about the CIRP Freshman Survey, visit:  
<http://heri.ucla.edu/cirp-freshman-survey/>

For a more detailed summary of the 2015 Freshman Survey results, contact us at [IR@csun.edu](mailto:IR@csun.edu)

To learn more about our freshmen, visit CSUN by the Numbers  
<http://www.csun.edu/institutional-research>