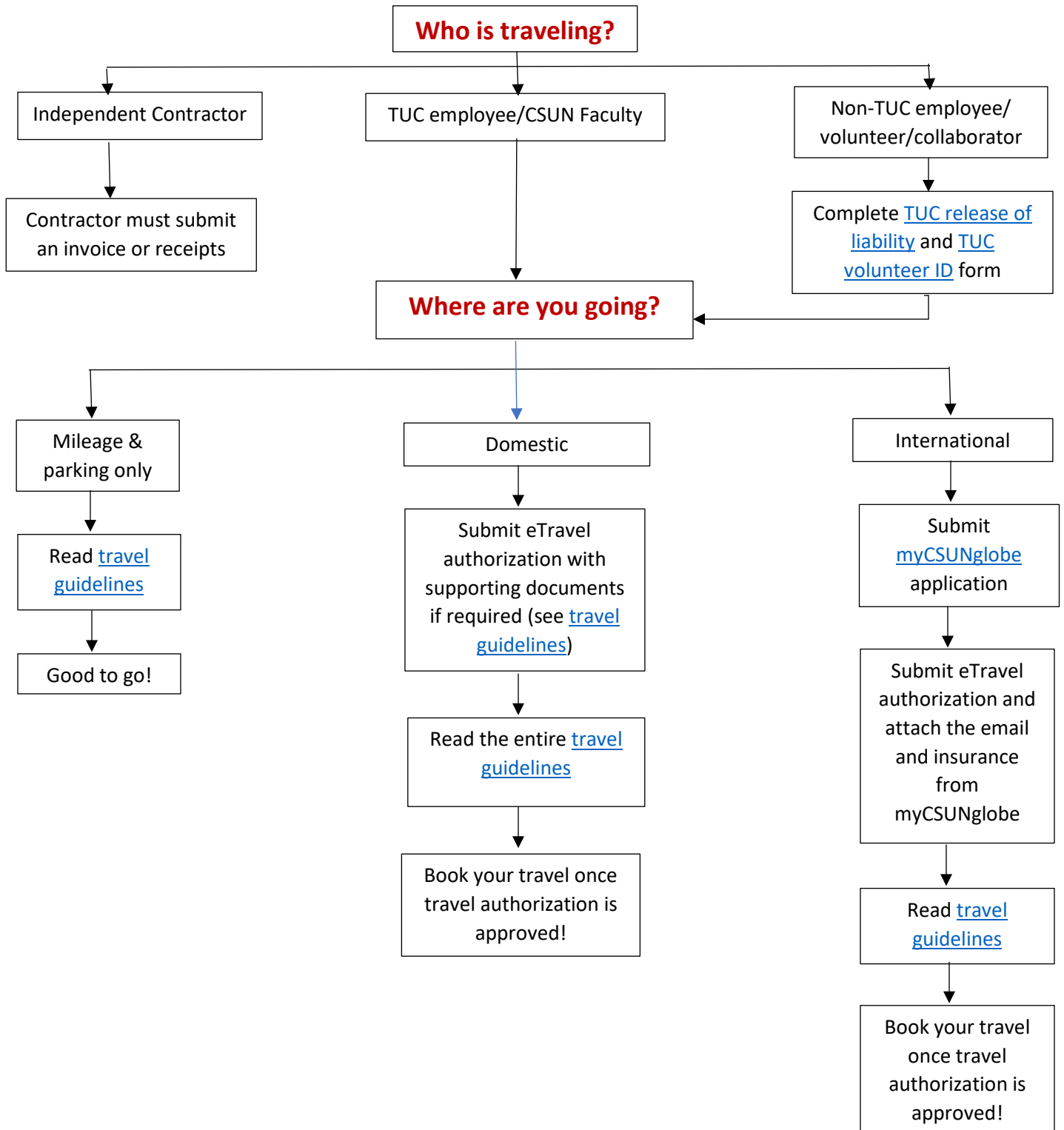


This applies to sponsored projects with travel account. If a project does not have a travel account, a budget revision and/or sponsor approval will be required.

[TUC Travel Guidelines Quick Reference Guide](#)



**If faculty is traveling internationally with students, please ensure that you complete Faculty-Led Program Proposal. Please contact [mycsunglobe@csun.edu](mailto:mycsunglobe@csun.edu) if you have any questions regarding international travel.**