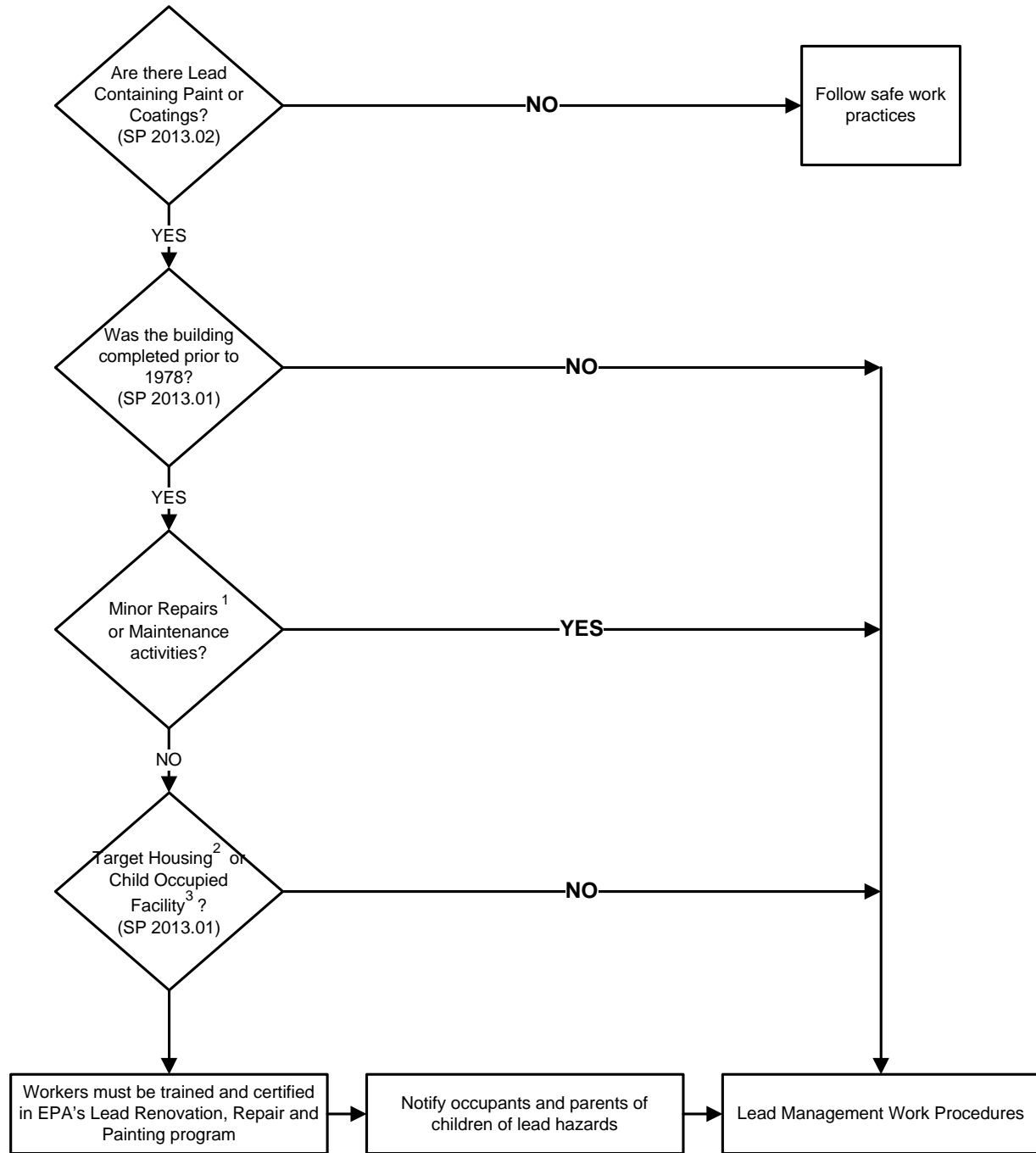


California State University Northridge	Lead Management Renovation, Repair and Painting Process Flow		SP 2013.03
	Revision 1.0	Revision Date June 1, 2010	Effective Date 06/01/2010



¹ Minor Repairs and Maintenance – projects that disturb no more than 6 square feet of interior surfaces or more than 20 square feet of exterior surfaces over a 30 day period, excluding certain activities utilizing high speed equipment such as grinding, sanding, blasting, etc

² Target Housing: housing constructed before 1978 or 0-bedroom dwellings

³ Child Occupied Facilities: building or a portion of a building visited by the same child under the age of six (6) years for more than 60 hours per year consisting of at least two visits within a week whose weekly total exceeds 6 hours with at least one single visit > 3 hours