

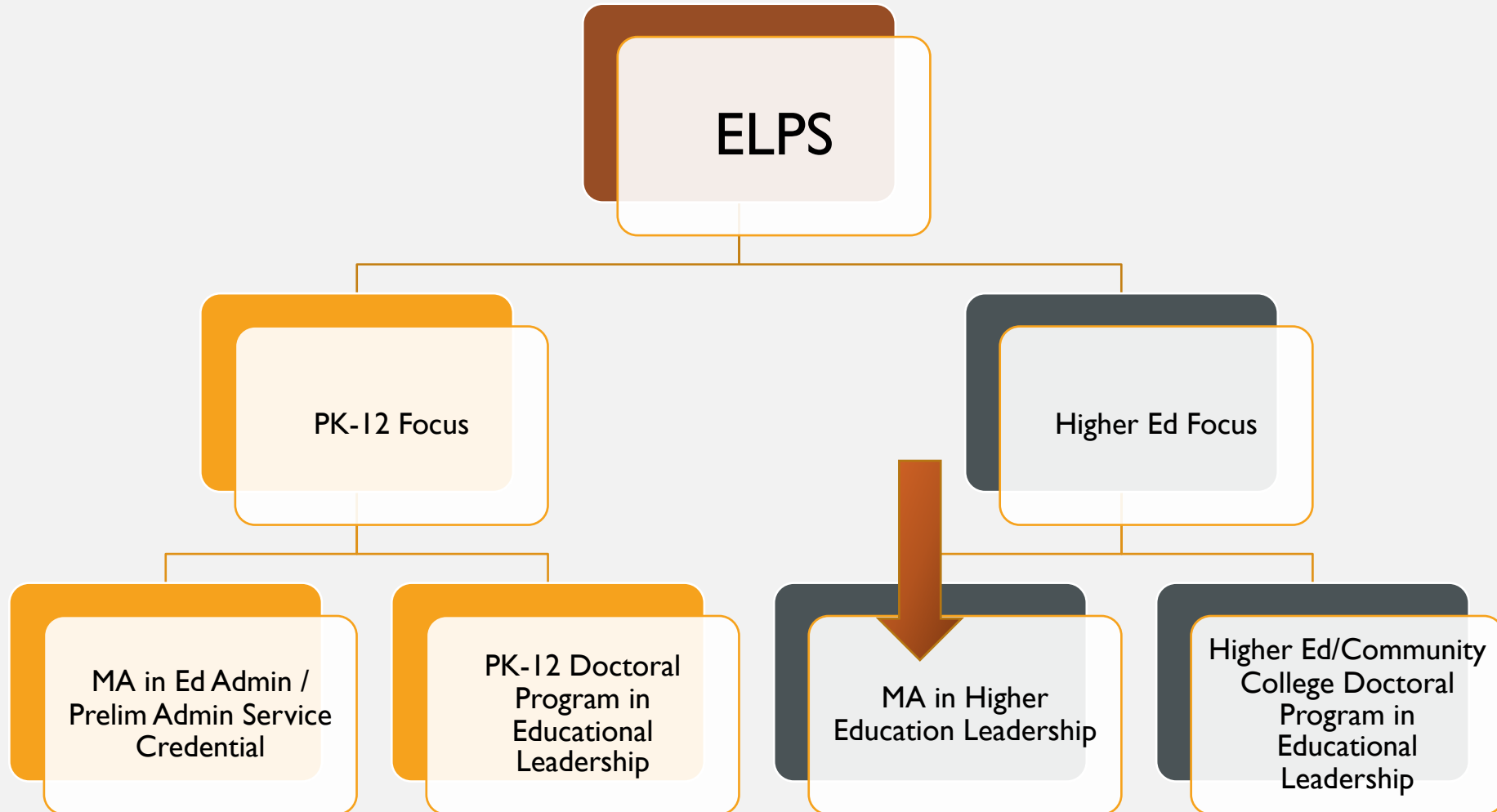


ELPS MASTERS IN HIGHER EDUCATION LEADERSHIP INFORMATION

General Information for Distribution

<https://www.csun.edu/eisner-education/educational-leadership-policy-studies/master-arts-higher-education-leadership>

STRUCTURE OF EDUCATIONAL LEADERSHIP & POLICY STUDIES DEPARTMENT



MISSION & OUTCOMES

- ① Facilitate the development, articulation, and vision of learning that is shared and supported by the higher education community.
- ② Advocate, nurture, and sustain a campus environment conducive to student learning and professional growth.
- ③ Ensure management of the organization, operations, and resources for a safe, efficient, and effective campus environment.
- ④ Engage with community members, respond to diverse community interests and needs, and mobilize community resources.
- ⑤ Model a personal code of ethics and develop a professional leadership capacity.
- ⑥ Understand, respond to, and influence the larger political, social, economic, legal, and cultural context.

OVERVIEW OF PROGRAM



- 2 years
- 11 courses (33 units)
- 4 semesters
- Small cohort size
- Hybrid Schedule (In-person & Online classes)
- **Fall 2024 Cohort meets Wednesday evenings for the entirety of the program (2 yrs)**
 - Class 1: 4:00-6:45pm
 - Class 2: 7-9:45pm
 - Class 3: Meet on select Thursday's online

COURSE SEQUENCE:

Look at catalog for course titles & description:

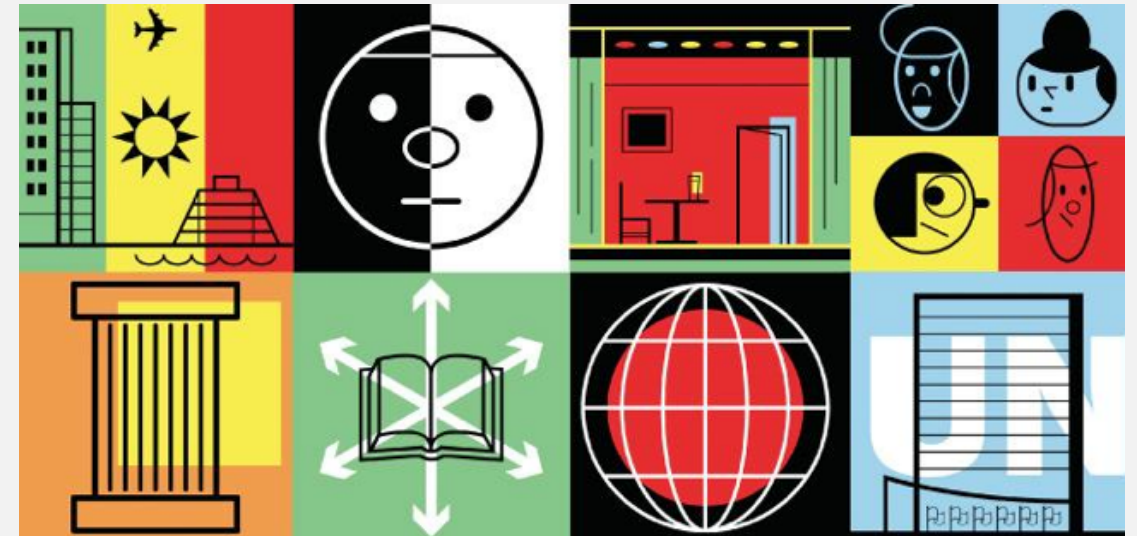
<https://catalog.csun.edu/academics/elps/programs/ma-higher-education-leadership/>

Year 1		Year 2	
Fall	Spring	Fall	Spring
ELPS 600HE	ELPS 650HE	ELPS 667HE	ELPS 663HE
ELPS 601HE	ELPS 656HE	ELPS 673HE	ELPS 674HE
	ELPS 688HE	ELPS 690HE	ELPS 697HE

EXAMPLES OF STUDENT RESEARCH INTERESTS

(develop and explore in 600he, 688he, and 690he in research teams)

- LGBTQ Alumni
- Undocumented Student Services
- First-Generation Students
- Black Women Athletes
- Gender Construction for Latinx Students
- College Choice Process for International Students
- Transfer Student Experiences
- First-Year Transition & Retention
- Impact of Bridge/Transitional Programs



CAMPUS ROLES OF INCOMING & CURRENT STUDENTS



Common Departments: Residential Life | Financial Aid | Student Outreach & Recruitment
Admissions & Records | Human Resources | Alumni Relations | Student Programming

Institutional Types: Public, Private, & For-Profit Colleges | Community College & University
Non-Profit Org

APPLICATION PROCESS/ELIGIBILITY:

1. Must have a B.A./B.S from a regionally accredited university by fall start of program
2. CSUN Graduate Division GPA requirement of 2.5 gpa
3. Apply to the ELPS department first, then CSUN if admitted to the program*
4. Complete department application online, Gather unofficial transcripts from all 4-year universities**
5. Statement of Purpose (2 double spaced pgs, provide your background, describe professional goals for this degree)
6. Critical Response (1 double spaced pg, discuss 2 challenges facing higher education in CA today)
7. Your professional resume or CV (not to exceed 2 pgs)
8. Two letters of recommendation(at least one letter should speak to your academic skills/experiences).
9. Submit all materials online at: <https://www.applyweb.com/cgi-bin/app?s=csun>

**Additional interview with Admissions Committee may be required **Official Transcripts will be required for the University Application*

TIMELINE FOR ADMISSIONS

*Rolling Admissions, Will Fill Cohort as
we Review, View Applications in Batches*

Fall 2024 Application
Deadline:
April 19, 2024

TUITION & FEES

First Semester will be 6 units, Part-Time Student Status
Next 3 Semesters are 9 units, Full-Time Student Status

**A Graduate is defined as any student having already earned a bachelor's degree.*

0 - 6.0 Units:

Mandatory Fee Category	SPR '23	FALL '23
Tuition Fee	\$2,082.00	\$2,082.00
<u>Associated Students Fee</u>	\$119.00	\$123.00
<u>Student Union Fee</u>	\$316.00	\$321.00
<u>Instructionally-Related Activities Fee</u>	\$21.00	\$22.00
<u>Health Facilities Fee</u>	\$3.00	\$3.00
<u>Health Services Fee</u>	\$78.00	\$79.00
Campus Quality Fee	\$124.00	\$126.00
Total tuition and other fees for Graduate/Post Baccalaureate:	\$2,743.00	\$2,756.00

6.1+ Units:

Mandatory Fee Category	SPR '23	FALL '23
Tuition Fee	\$3,588.00	\$3,588.00
<u>Associated Students Fee</u>	\$119.00	\$123.00
<u>Student Union Fee</u>	\$316.00	\$321.00
<u>Instructionally-Related Activities Fee</u>	\$21.00	\$22.00
<u>Health Facilities Fee</u>	\$3.00	\$3.00
<u>Health Services Fee</u>	\$78.00	\$79.00
<u>Campus Quality Fee</u>	\$124.00	\$126.00
Total tuition and other fees for Graduate/Post Baccalaureate:	\$4,249.00	\$4,262.00

<https://www.csun.edu/stufin/tuition>

BENEFITS OF OUR PROGRAM



- Degree from highly respected CSUN College of Education
- Designed to help educators assume leadership roles
- Cohort-based program for working professionals
- Diverse curriculum and faculty
- Two years to degree completion and high on-time graduation rates
- Strong alumni network

Contact Us ☺

ELPS Department Phone #: (818) 677-2591

ELPS Department Email: csunelps@csun.edu

Graduate Coordinator Email: dimpal.jain@csun.edu