

UNDERGRADUATE STUDENT SUCCESS RATES/ Public Accountability 2013-14

COLLEGE WIDE

RETENTION RATES

FIRST TIME FRESHMAN ENROLLED ONE YEAR					
FALL ENTRY YEAR	2011	2010	2009	2008	2007
TOTAL COHORT	521	558	427	406	372
PERCENT WHO CONTINUED INTO SEC	68.9	71.7	70.7	68.7	71

NEW TRANSFERS ENROLLED ONE YEAR AFTER

TOTAL COHORT	954	827	613	606	620
PERCENT WHO CONTINUED INTO SEC	82.5	84.6	83.3	83.2	86.5

GRADUATION RATES FOR CSBS UNDERGRADI

FIRST TIME FRESHMAN AFTER SIX YEARS					
FALL ENTRY YEAR	2006 (2012)	2005 (2011)	2004 (2010)	2003 (2009)	2002 (2008)
TOTAL INCOMING COHORT	215	200	152	190	159
PERCENT GRADUATED	49.7	46.7	47.9	43.5	45.7
PERCENT LIKELY TO GRADUATE	54.3	54.2	53.9	51.3	53.2

NEW TRANSFER STUDENTS AFTER THREE YEA

FALL ENTRY YEAR	2009 (2012)	2008 (2011)	2007 (2010)	2006 (2009)	2005 (2008)
TOTAL INCOMING COHORT	511	505	441	460	412
PERCENT GRADUATED	69.4	69.4	61.5	61.8	57.9
PERCENT LIKELY TO GRADUATE	77.6	77.3	75.3	76.6	74.4

TOTAL CSBS UNDERGRADUATE DEGREES BY YEAR AND PROGRAM

	2012	2011	2010	2009	2008
ANTHROPOLOGY	40	35	41	32	37
GEOGRAPHY	32	28	41	21	44
HISTORY	103	133	137	119	117
PAN AFRICAN STUDIES	13	18	19	12	29
POLITICAL SCIENCE	153	160	156	160	130
PSYCHOLOGY	598	609	641	505	577
SOCIOLOGY	489	460	416	412	430
URBAN STUDIES AND PLANNING	34	43	43	35	32
TOTAL	1462	1486	1494	1296	1396

CSBS GRADE POINT AVERAGES AT EXIT

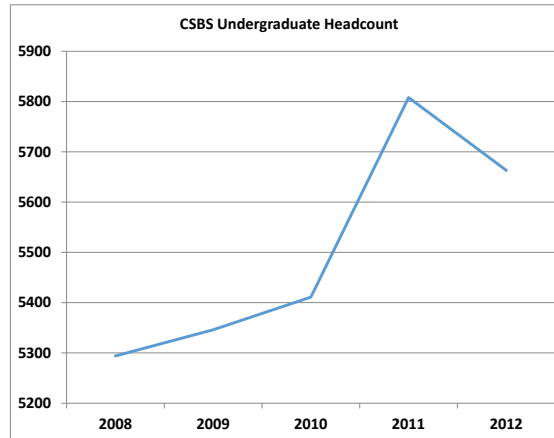
ACADEMIC YEAR	2012	2011	2010	2009	2008
FIRST-TIME FRESHMAN AT EXIT	2.89	2.82	2.87	2.84	2.82
FIRST-TIME TRANSFER AT EXIT	2.98	3.02	3.01	2.98	3.04

CSBS Undergrad Headcount by Level (Fall)

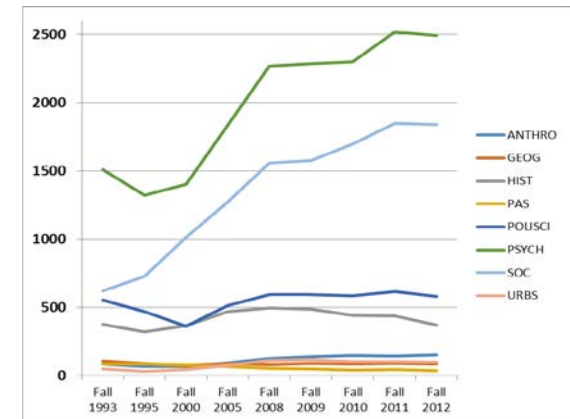
Numbers	2012	2011	2010	2009	2008
Freshman	1011	1138	1071	921	879
Sophomore	682	667	628	555	588
Junior	2076	2199	1902	1967	1975
Senior	1894	1804	1810	1903	1852
Total	5663	5808	5411	5346	5294

All Student Headcount by Ethnicity - CSBS (Fall)

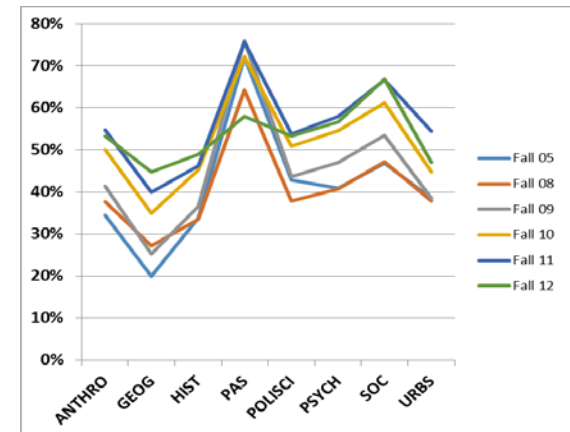
Numbers	2012	2011	2010	2009	2008
Traditionally Underserved	3,413	3,389	3,027	2,844	2,803
American Indian/Alaskan Native	15	16	23	25	31
Native Hawaiian/Pacific Islander	10	7	19	28	20
African American	498	562	584	579	630
Latina/o	2,890	2,804	2,401	2,212	2,122
Asian	366	382	383	383	414
White	1,678	1,786	1,675	1,682	1,655
Multi-Race/Other	165	151	108	61	18
Unknown	412	488	596	718	728
International	179	182	167	205	175
Total	6,213	6,378	5,956	5,893	5,793



Total Undergrad Headcount per CSBS Dept 1993-2012:



% of CSBS Students Receiving Pell Grants by Dept & Year



% students receiving Pell Grants

Depart	Fall 05	Fall 08	Fall 09	Fall 10	Fall 11	Fall 12
ANTHR	34.4%	37.6%	41.3%	50.0%	54.8%	53.3%
GEOG	20.0%	27.2%	25.3%	34.9%	40.0%	44.8%
HIST	33.8%	33.5%	36.6%	45.3%	46.2%	48.9%
PAS	72.1%	64.3%	76.0%	72.1%	75.6%	57.9%
POLISCI	42.8%	37.9%	43.6%	50.8%	53.7%	53.3%
PSYCH	40.9%	40.8%	47.0%	54.6%	57.9%	56.6%
SOC	46.8%	47.1%	53.4%	61.2%	66.6%	66.8%
URBS	38.5%	37.8%	38.5%	44.8%	54.4%	47.0%

ANTHROPOLOGY

RETENTION RATES

FIRST TIME FRESHMAN ENROLLED ONE YEAR					
FALL ENTRY YEAR	2011	2010	2009	2008	2007
TOTAL COHORT	13	17	10	7	5
PERCENT WHO CONTINUED INTO SEC	69.2	52.9	100	85.7	80
NEW TRANSFERS ENROLLED ONE YEAR AFTER					
TOTAL COHORT	34	39	36	26	27
PERCENT WHO CONTINUED INTO SEC	82.4	79.5	77.8	80.8	92.6

GRADUATION RATES FOR CSUN ANTHROPOLOGY

FIRST TIME FRESHMAN AFTER SIX YEARS					
FALL ENTRY YEAR	2006 (2012)	2005 (2011)	2004 (2010)	2003 (2009)	2002 (2008)
TOTAL INCOMING COHORT	3	6	5	2	4
PERCENT GRADUATED	33.3	33.3	60	0	75
PERCENT LIKELY TO GRADUATE	33.3	50	80	0	100
NEW TRANSFER STUDENTS AFTER THREE YEARS					
FALL ENTRY YEAR	2009 (2012)	2008 (2011)	2007 (2010)	2006 (2009)	2005 (2008)
TOTAL INCOMING COHORT	36	26	27	29	11
PERCENT GRADUATED	55.6	61.5	59.3	55.2	54.5
PERCENT LIKELY TO GRADUATE	69.4	69.2	81.5	65.5	63.6

ANTHROPOLOGY GRADUATES BY YEAR AND I

	2012	2011	2010	2009	2008
ANTHROPOLOGY MAJOR	40	35	41	32	37
ANTHROPOLOGY MINOR	7	19	12	15	19

ANTHROPOLOGY GRADE POINT AVERAGES

ACADEMIC YEAR	2012	2011	2010	2009	2008
FIRST-TIME FRESHMAN AT EXIT	2.9	3.31	2.72	2.75	3.59
FIRST-TIME TRANSFER AT EXIT	2.9	3.08	3.2	2.99	3.13

Undergrad Headcount by Level (Fall)

Numbers	2012	2011	2010	2009	2008
Freshman	21	17	20	16	10
Sophomore	8	13	16	6	8
Junior	53	52	58	58	57
Senior	70	64	54	58	50
Total	152	146	148	138	125

New First Time Freshmen Headcount by Ethnicity in Anthropology (Fall)

Numbers	2012	2011	2010	2009	2008
Traditionally Underserved	13	8	14	6	1
American Indian/Alaskan Native	0	0	0	0	0
Native Hawaiian/Pacific Islander	0	0	0	0	0
African American	2	1	2	1	0
Latina/o	11	7	12	5	1
Asian	0	2	0	0	1
White	2	1	3	4	5
Multi-Race/Other	1	0	0	0	0
Unknown	1	1	0	1	0
International	0	1	0	0	0
Total	17	13	17	11	7

New Undergraduate Transfers by Ethnicity in Anthropology (Fall)

Numbers	2012	2011	2010	2009	2008
Traditionally Underserved	9	10	11	7	11
American Indian/Alaskan Native	0	0	1	0	0
Native Hawaiian/Pacific Islander	0	0	0	0	0
African American	1	1	2	0	3
Latina/o	8	9	8	7	8
Asian	0	1	3	2	2
White	11	18	19	16	9
Multi-Race/Other	1	1	1	2	0
Unknown	3	3	5	8	5
International	0	1	0	1	0
Total	24	34	39	36	27

GEOGRAPHY**RETENTION RATES**

FIRST TIME FRESHMAN ENROLLED ONE YEAR AFTER ENTRY					
FALL ENTRY YEAR	2011	2010	2009	2008	2007
TOTAL COHORT	1	1	1	1	N/A
PERCENT WHO CONTINUED INTO SEC	100	0	100	100	N/A
NEW TRANSFERS ENROLLED ONE YEAR AFTER ENTRY					
TOTAL COHORT	20	17	13	5	14
PERCENT WHO CONTINUED INTO SEC	80	82.4	84.6	80	85.7

GRADUATION RATES FOR CSUN GEOGRAPHY MAJORS

FIRST TIME FRESHMAN AFTER SIX YEARS					
FALL ENTRY YEAR	2006 (2012)	2005 (2011)	2004 (2010)	2003 (2009)	2002 (2008)
TOTAL INCOMING COHORT	1	1	N/A	N/A	N/A
PERCENT GRADUATED	100	100	N/A	N/A	N/A
PERCENT LIKELY TO GRADUATE	100	100	N/A	N/A	N/A
NEW TRANSFER STUDENTS AFTER THREE YEARS					
FALL ENTRY YEAR	2009 (2012)	2008 (2011)	2007 (2010)	2006 (2009)	2005 (2008)
TOTAL INCOMING COHORT	13	5	14	14	20
PERCENT GRADUATED	53.8	80	64.3	78.6	35
PERCENT LIKELY TO GRADUATE	76.9	80	78.6	85.7	70

GEOGRAPHY GRADUATES BY YEAR AND PROGRAM

	2012	2011	2010	2009	2008
GEOGRAPHY MAJOR	32	28	41	21	44
GEOGRAPHY MINOR	5	10	20	12	7

GEOGRAPHY GRADE POINT AVERAGES

ACADEMIC YEAR	2012	2011	2010	2009	2008
FIRST-TIME FRESHMAN AT EXIT	3.04	2.94	2.48	2.51	2.26
FIRST-TIME TRANSFER AT EXIT	3.02	2.96	3	3.06	3.33

Undergrad Headcount by Level (Fall)

Numbers	2012	2011	2010	2009	2008
Freshman	5	1	3	2	3
Sophomore	6	12	9	9	3
Junior	36	35	31	28	31
Senior	40	42	43	52	44
Total	87	90	86	91	81

New First Time Freshmen Headcount by Ethnicity in Geography (Fall)

Numbers	2012	2011	2010	2009	2008
Traditionally Underserved	1	0	0	0	0
American Indian/Alaskan Native	0	0	0	0	0
Native Hawaiian/Pacific Islander	0	0	0	0	0
African American	0	0	0	0	0
Latina/o	1	0	0	0	0
Asian	0	1	0	0	0
White	1	0	1	1	2
Multi-Race/Other	0	0	0	0	0
Unknown	0	0	0	0	0
International	0	0	0	0	0
Total	2	1	1	1	2

New Undergraduate Transfers by Ethnicity in Geography (Fall)

Numbers	2012	2011	2010	2009	2008
Traditionally Underserved	2	4	6	3	0
American Indian/Alaskan Native	0	0	0	0	0
Native Hawaiian/Pacific Islander	0	0	0	0	0
African American	0	0	0	1	0
Latina/o	2	4	6	2	0
Asian	1	1	1	0	0
White	1	12	7	5	3
Multi-Race/Other	0	1	0	0	0
Unknown	0	2	1	5	2
International	0	0	2	0	0
Total	4	20	17	13	5

HISTORY

RETENTION RATES FOR CSUN HISTORY MAJORS

FIRST TIME FRESHMAN ENROLLED ONE YEAR AFTER ENTRY					
FALL ENTRY YEAR	2011	2010	2009	2008	2007
TOTAL COHORT	45	59	41	52	50
PERCENT WHO CONTINUED INTO SEC	60	78	75.6	65.4	64
NEW TRANSFERS ENROLLED ONE YEAR AFTER ENTRY					
TOTAL COHORT	109	80	63	74	90
PERCENT WHO CONTINUED INTO SEC	76.1	88.8	79.4	75.7	84.4

GRADUATION RATES FOR CSUN HISTORY MA

FIRST TIME FRESHMAN AFTER SIX YEARS					
FALL ENTRY YEAR	2006 (2012)	2005 (2011)	2004 (2010)	2003 (2009)	2002 (2008)
TOTAL INCOMING COHORT	35	28	34	36	32
PERCENT GRADUATED	57.1	39.3	44.1	41.7	50
PERCENT LIKELY TO GRADUATE	68.6	50	55.9	44.4	53.1
NEW TRANSFER STUDENTS AFTER THREE YEA					
FALL ENTRY YEAR	2009 (2012)	2008 (2011)	2007 (2010)	2006 (2009)	2005 (2008)
TOTAL INCOMING COHORT	63	74	90	82	85
PERCENT GRADUATED	60.3	59.5	50	52.4	50.6
PERCENT LIKELY TO GRADUATE	71.4	68.9	72.2	68.3	63.5

HISTORY GRADUATES BY YEAR AND PROGRAM

	2012	2011	2010	2009	2008
HISTORY MAJOR	103	133	137	119	117
HISTORY MINOR	10	16	11	16	18

HISTORY GRADE POINT AVERAGES

ACADEMIC YEAR	2012	2011	2010	2009	2008
FIRST-TIME FRESHMAN AT EXIT	2.94	2.81	2.92	3.11	2.94
FIRST-TIME TRANSFER AT EXIT	3.03	2.96	2.98	2.91	3.08

Undergrad Headcount by Level (Fall)

Numbers	2012	2011	2010	2009	2008
Freshman	44	75	76	62	70
Sophomore	33	34	36	41	47
Junior	144	184	151	194	184
Senior	149	144	181	189	195
Total	370	437	444	486	496

New First Time Freshmen Headcount by Ethnicity in History (Fall)

Numbers	2012	2011	2010	2009	2008
Traditionally Underserved	11	28	32	27	26
American Indian/Alaskan Native	0	0	0	0	0
Native Hawaiian/Pacific Islander	0	0	0	0	1
African American	0	2	3	1	2
Latina/o	11	26	29	26	23
Asian	2	5	6	0	9
White	9	10	15	11	13
Multi-Race/Other	4	1	2	0	0
Unknown	1	2	3	2	3
International	0	1	1	2	1
Total	27	47	59	42	52

New Undergraduate Transfers by Ethnicity in History (Fall)

Numbers	2012	2011	2010	2009	2008
Traditionally Underserved	24	30	24	25	31
American Indian/Alaskan Native	1	0	0	0	1
Native Hawaiian/Pacific Islander	0	0	0	0	1
African American	1	2	2	2	6
Latina/o	22	28	22	23	23
Asian	4	5	6	1	5
White	26	62	39	22	31
Multi-Race/Other	1	0	4	0	0
Unknown	3	9	5	14	6
International	0	3	2	1	3
Total	58	109	80	63	76

PAN AFRICAN STUDIES

RETENTION RATES FOR CSUN PAN AFRICAN STUDIES MAJORS

FIRST TIME FRESHMAN ENROLLED ONE YEAR AFTER ENTRY					
FALL ENTRY YEAR	2011	2010	2009	2008	2007
TOTAL COHORT	3	3	1	5	2
PERCENT WHO CONTINUED INTO SEC	66.7	100	0	60	50
NEW TRANSFERS ENROLLED ONE YEAR AFTER ENTRY					
TOTAL COHORT	1	1	7	3	3
PERCENT WHO CONTINUED INTO SEC	100	100	85.7	100	66.7

GRADUATION RATES FOR CSUN PAN AFRICAN STUDIES MAJORS

FIRST TIME FRESHMAN AFTER SIX YEARS					
FALL ENTRY YEAR	2006 (2012)	2005 (2011)	2004 (2010)	2003 (2009)	2002 (2008)
TOTAL INCOMING COHORT	N/A	3	2	5	2
PERCENT GRADUATED	N/A	33.3	50	80	0
PERCENT LIKELY TO GRADUATE	N/A	100	50	80	0
NEW TRANSFER STUDENTS AFTER THREE YEARS					
FALL ENTRY YEAR	2009 (2012)	2008 (2011)	2007 (2010)	2006 (2009)	2005 (2008)
TOTAL INCOMING COHORT	7	3	3	5	4
PERCENT GRADUATED	71.4	66.7	33.3	20	25
PERCENT LIKELY TO GRADUATE	71.4	66.7	33.3	20	25

PAN AFRICAN STUDIES GRADUATES BY YEAR AND PROGRAM

	2012	2011	2010	2009	2008
PAN AFRICAN STUDIES MAJOR	13	18	19	12	29
PAN AFRICAN STUDIES MINOR	30	26	17	21	18

PAN AFRICAN STUDIES GRADE POINT AVERAGES

ACADEMIC YEAR	2012	2011	2010	2009	2008
FIRST-TIME FRESHMAN AT EXIT	2.55	2.54	2.56	2.24	2.44
FIRST-TIME TRANSFER AT EXIT	2.72	2.76	2.24	2.7	3.01

Undergrad Headcount by Level (Fall)

Numbers	2012	2011	2010	2009	2008
Freshman	4	4	3	4	6
Sophomore	2	5	4	3	6
Junior	11	19	11	17	21
Senior	21	17	25	26	23
Total	38	45	43	50	56

New First Time Freshmen Headcount by Ethnicity in Pan African Studies (Fall)

Numbers	2012	2011	2010	2009	2008
Traditionally Underserved	3	2	3	1	5
American Indian/Alaskan Native	0	0	0	0	0
Native Hawaiian/Pacific Islander	0	0	0	0	0
African American	3	2	3	1	5
Latina/o	0	0	0	0	0
Asian	0	1	0	0	0
White	0	0	0	0	0
Multi-Race/Other	0	0	0	0	0
Unknown	0	0	0	0	0
International	0	0	0	0	0
Total	3	3	3	1	5

New Undergraduate Transfers by Ethnicity in Pan African Studies (Fall)

Numbers	2012	2011	2010	2009	2008
Traditionally Underserved	1	2	1	2	2
American Indian/Alaskan Native	0	0	0	0	0
Native Hawaiian/Pacific Islander	0	0	0	0	0
African American	1	2	1	2	2
Latina/o	0	0	0	0	0
Asian	0	0	0	0	0
White	0	0	0	0	0
Multi-Race/Other	0	0	0	1	0
Unknown	0	0	0	4	1
International	0	0	0	0	0
Total	1	2	1	7	3

POLITICAL SCIENCE

RETENTION RATES FOR CSUN POLITICAL SCIENCE

FIRST TIME FRESHMAN ENROLLED ONE YEAR					
FALL ENTRY YEAR	2011	2010	2009	2008	2007
TOTAL COHORT	86	87	87	65	65
PERCENT WHO CONTINUED INTO SEC	69.8	72.4	72.4	58.5	69.2
NEW TRANSFERS ENROLLED ONE YEAR AFTER					
TOTAL COHORT	107	93	75	61	74
PERCENT WHO CONTINUED INTO SEC	80.4	76.3	81.3	86.9	89.2

GRADUATION RATES FOR CSUN POLITICAL SCIENCE

FIRST TIME FRESHMAN AFTER SIX YEARS					
FALL ENTRY YEAR	2006 (2012)	2005 (2011)	2004 (2010)	2003 (2009)	2002 (2008)
TOTAL INCOMING COHORT	71	55	41	74	45
PERCENT GRADUATED	49.3	52.7	63.4	48.6	40
PERCENT LIKELY TO GRADUATE	53.5	63.6	68.3	52.7	42.2
NEW TRANSFER STUDENTS AFTER THREE YEARS					
FALL ENTRY YEAR	2009 (2012)	2008 (2011)	2007 (2010)	2006 (2009)	2005 (2008)
TOTAL INCOMING COHORT	75	61	74	70	81
PERCENT GRADUATED	66.7	67.2	55.4	57.1	46.9
PERCENT LIKELY TO GRADUATE	76	70.5	77	72.9	61.7

POLITICAL SCIENCE GRADUATES BY YEAR AND PROGRAM

	2012	2011	2010	2009	2008
POLITICAL SCIENCE MAJOR	153	160	156	160	130
POLITICAL SCIENCE MINOR	9	15	11	11	11

POLITICAL SCIENCE GRADE POINT AVERAGES

ACADEMIC YEAR	2012	2011	2010	2009	2008
FIRST-TIME FRESHMAN AT EXIT	2.78	3	2.98	2.92	2.92
FIRST-TIME TRANSFER AT EXIT	2.91	2.96	2.89	2.96	3

Undergrad Headcount by Level (Fall)

Numbers	2012	2011	2010	2009	2008
Freshman	116	128	114	112	97
Sophomore	86	84	83	74	86
Junior	216	222	206	209	202
Senior	165	182	184	201	209
Total	583	616	587	596	594

New First Time Freshmen Headcount by Ethnicity in Political Science (Fall)

Numbers	2012	2011	2010	2009	2008
Traditionally Underserved	47	63	63	59	41
American Indian/Alaskan Native	0	0	0	0	0
Native Hawaiian/Pacific Islander	1	0	1	1	0
African American	6	9	13	12	13
Latina/o	40	54	49	46	28
Asian	3	3	7	5	5
White	12	10	13	13	12
Multi-Race/Other	1	4	1	2	0
Unknown	2	2	1	5	7
International	3	4	3	4	2
Total	68	86	88	88	67

New Undergraduate Transfers by Ethnicity in Political Science (Fall)

Numbers	2012	2011	2010	2009	2008
Traditionally Underserved	28	39	34	21	18
American Indian/Alaskan Native	0	1	0	0	0
Native Hawaiian/Pacific Islander	0	0	0	0	0
African American	6	6	5	5	6
Latina/o	22	32	29	16	12
Asian	3	9	7	3	7
White	36	43	36	33	26
Multi-Race/Other	0	4	4	2	0
Unknown	3	3	10	15	10
International	5	9	3	1	1
Total	75	107	94	75	62

PSYCHOLOGY**RETENTION RATES FOR CSUN PSYCHOLOGY**

FIRST TIME FRESHMAN ENROLLED ONE YEAR					
FALL ENTRY YEAR	2011	2010	2009	2008	2007
TOTAL COHORT	365	371	302	313	252
PERCENT WHO CONTINUED INTO SEC	73.4	72.5	68.2	71.2	73.8
NEW TRANSFERS ENROLLED ONE YEAR AFTER					
TOTAL COHORT	516	426	316	327	320
PERCENT WHO CONTINUED INTO SEC	83.5	86.6	84.8	83.2	89.1

GRADUATION RATES FOR CSUN PSYCHOLOGY

FIRST TIME FRESHMAN AFTER SIX YEARS					
FALL ENTRY YEAR	2006 (2012)	2005 (2011)	2004 (2010)	2003 (2009)	2002 (2008)
TOTAL INCOMING COHORT	202	228	157	213	176
PERCENT GRADUATED	51.5	48.2	44.6	45.1	47.7
PERCENT LIKELY TO GRADUATE	55.9	54.8	49.7	54.5	56.3
NEW TRANSFER STUDENTS AFTER THREE YEA					
FALL ENTRY YEAR	2009 (2012)	2008 (2011)	2007 (2010)	2006 (2009)	2005 (2008)
TOTAL INCOMING COHORT	316	327	320	330	317
PERCENT GRADUATED	72.8	70.9	65.3	65.8	59
PERCENT LIKELY TO GRADUATE	79.7	79.2	78.1	83	78.9

PSYCHOLOGY GRADUATES BY YEAR AND PRO

	2012	2011	2010	2009	2008
PSYCHOLOGY MAJOR	598	609	641	505	577
PSYCHOLOGY MINOR	40	45	56	51	53

PSYCHOLOGY GRADE POINT AVERAGES

ACADEMIC YEAR	2012	2011	2010	2009	2008
FIRST-TIME FRESHMAN AT EXIT	3.05	2.84	2.92	2.92	2.9
FIRST-TIME TRANSFER AT EXIT	3.01	3.11	3.05	3.05	3.06

Undergrad Headcount by Level (Fall)

Numbers	2012	2011	2010	2009	2008
Freshman	464	535	514	459	449
Sophomore	284	296	275	240	251
Junior	914	955	786	827	835
Senior	829	733	727	764	735
Total	2491	2519	2302	2290	2270

New First Time Freshmen Headcount by Ethnicity in Psychology (Fall)

Numbers	2012	2011	2010	2009	2008
Traditionally Underserved	214	274	267	208	220
American Indian/Alaskan Native	1	1	0	2	0
Native Hawaiian/Pacific Islander	0	0	0	0	0
African American	24	38	49	49	52
Latina/o	189	235	218	157	168
Asian	18	16	23	21	24
White	34	49	54	51	52
Multi-Race/Other	11	16	12	7	0
Unknown	9	11	10	10	12
International	6	6	6	9	10
Total	292	372	372	306	318

New Undergraduate Transfers by Ethnicity in Psychology (Fall)

Numbers	2012	2011	2010	2009	2008
Traditionally Underserved	179	196	167	103	124
American Indian/Alaskan Native	1	1	1	1	3
Native Hawaiian/Pacific Islander	0	1	0	0	3
African American	13	27	19	12	16
Latina/o	165	167	147	90	102
Asian	33	44	23	15	25
White	132	212	172	122	119
Multi-Race/Other	9	20	12	11	1
Unknown	23	23	36	55	55
International	14	22	16	17	13
Total	390	517	426	323	337

SOCIOLOGY

RETENTION RATES FOR CSUN SOCIOLOGY MAJ

FIRST TIME FRESHMAN ENROLLED ONE YEAR					
FALL ENTRY YEAR	2011	2010	2009	2008	2007
TOTAL COHORT	236	239	160	146	145
PERCENT WHO CONTINUED INTO SEC	62.7	69.9	71.9	68.5	68.3
NEW TRANSFERS ENROLLED ONE YEAR AFTER					
TOTAL COHORT	349	301	207	222	176
PERCENT WHO CONTINUED INTO SEC	84	84.1	83.1	85.1	81.3

GRADUATION RATES FOR CSUN SOCIOLOGY I

FIRST TIME FRESHMAN AFTER SIX YEARS					
FALL ENTRY YEAR	2006 (2012)	2005 (2011)	2004 (2010)	2003 (2009)	2002 (2008)
TOTAL INCOMING COHORT	116	106	77	107	87
PERCENT GRADUATED	44.8	42.5	48.1	36.4	42.5
PERCENT LIKELY TO GRADUATE	48.3	47.2	53.2	45.8	51.7
NEW TRANSFER STUDENTS AFTER THREE YEA					
FALL ENTRY YEAR	2009 (2012)	2008 (2011)	2007 (2010)	2006 (2009)	2005 (2008)
TOTAL INCOMING COHORT	207	222	176	198	180
PERCENT GRADUATED	71.5	71.6	63.6	61.1	66.1
PERCENT LIKELY TO GRADUATE	78.7	80.6	71	73.2	79.4

SOCIOLOGY GRADUATES BY YEAR AND PROGRAM

	2012	2011	2010	2009	2008
SOCIOLOGY MAJOR	489	460	416	412	430
SOCIOLOGY MINOR	31	33	30	19	29

SOCIOLOGY GRADE POINT AVERAGES

ACADEMIC YEAR	2012	2011	2010	2009	2008
FIRST-TIME FRESHMAN AT EXIT	2.76	2.74	2.84	2.74	2.72
FIRST-TIME TRANSFER AT EXIT	2.94	2.95	2.96	2.89	2.97

Undergrad Headcount by Level (Fall)

Numbers	2012	2011	2010	2009	2008
Freshman	353	371	339	257	238
Sophomore	255	216	194	172	177
Junior	665	684	621	585	596
Senior	569	581	542	564	550
Total	1842	1852	1696	1578	1561

New First Time Freshmen Headcount by Ethnicity in Sociology (Fall)

Numbers	2012	2011	2010	2009	2008
Traditionally Underserved	188	211	196	132	118
American Indian/Alaskan Native	0	0	1	0	0
Native Hawaiian/Pacific Islander	0	0	4	2	0
African American	24	19	35	24	33
Latina/o	164	192	156	106	85
Asian	7	7	9	9	6
White	18	11	27	13	16
Multi-Race/Other	4	2	5	2	0
Unknown	7	6	3	5	9
International	2	3	1	2	3
Total	226	240	241	163	152

New Undergraduate Transfers by Ethnicity in Sociology (Fall)

Numbers	2012	2011	2010	2009	2008
Traditionally Underserved	139	189	149	105	122
American Indian/Alaskan Native	2	2	2	0	3
Native Hawaiian/Pacific Islander	0	0	0	0	0
African American	14	17	14	15	11
Latina/o	123	170	133	90	108
Asian	17	23	23	13	14
White	79	102	85	57	59
Multi-Race/Other	12	4	10	1	0
Unknown	7	17	28	24	24
International	8	14	8	9	9
Total	262	349	303	209	228

URBAN STUDIES & PLANNING

RETENTION RATES FOR CSUN URBAN STUDIE:

FIRST TIME FRESHMAN ENROLLED ONE YEAR					
FALL ENTRY YEAR	2011	2010	2009	2008	2007
TOTAL COHORT	7	1	2	2	5
PERCENT WHO CONTINUED INTO SEC	85.7	100	50	50	100
NEW TRANSFERS ENROLLED ONE YEAR AFTER					
TOTAL COHORT	21	21	19	10	13
PERCENT WHO CONTINUED INTO SEC	76.2	81	89.5	80	84.6

GRADUATION RATES FOR CSUN URBAN STUD

FIRST TIME FRESHMAN AFTER SIX YEARS					
FALL ENTRY YEAR	2006 (2012)	2005 (2011)	2004 (2010)	2003 (2009)	2002 (2008)
TOTAL INCOMING COHORT	5	1	1	N/A	2
PERCENT GRADUATED	40	100	0	N/A	50
PERCENT LIKELY TO GRADUATE	40	100	0	N/A	50
NEW TRANSFER STUDENTS AFTER THREE YEA					
FALL ENTRY YEAR	2009 (2012)	2008 (2011)	2007 (2010)	2006 (2009)	2005 (2008)
TOTAL INCOMING COHORT	19	10	13	16	14
PERCENT GRADUATED	68.4	70	61.5	68.8	78.6
PERCENT LIKELY TO GRADUATE	73.7	70	69.2	75	78.6

URBAN STUDIES GRADUATES BY YEAR AND PROGRAM

	2012	2011	2010	2009	2008
URBAN STUDIES MAJOR	34	43	43	35	32
URBAN STUDIES MINOR	0	2	1	4	3

URBAN STUDIES GRADE POINT AVERAGES

ACADEMIC YEAR	2012	2011	2010	2009	2008
FIRST-TIME FRESHMAN AT EXIT	2.7	2.64	2.9	2.84	2.86
FIRST-TIME TRANSFER AT EXIT	3.2	2.81	3.12	3.13	3.04

Undergrad Headcount by Level (Fall)

Numbers	2012	2011	2010	2009	2008
Freshman	4	7	2	9	6
Sophomore	8	7	11	10	10
Junior	37	48	38	49	49
Senior	51	41	54	49	46
Total	100	103	105	117	111

New First Time Freshmen Headcount by Ethnicity in Urban Studies and Planning (Fall)

Numbers	2012	2011	2010	2009	2008
Traditionally Underserved	1	5	1	2	2
American Indian/Alaskan Native	0	0	0	1	0
Native Hawaiian/Pacific Islander	0	0	0	0	0
African American	1	1	0	0	0
Latina/o	0	4	1	1	2
Asian	0	0	0	1	0
White	0	0	0	0	0
Multi-Race/Other	1	1	0	0	0
Unknown	1	1	0	0	0
International	0	0	0	0	0
Total	3	7	1	3	2

New Undergraduate Transfers by Ethnicity in Urban Studies and Planning (Fall)

Numbers	2012	2011	2010	2009	2008
Traditionally Underserved	5	4	6	7	6
American Indian/Alaskan Native	0	0	0	0	0
Native Hawaiian/Pacific Islander	0	0	0	0	0
African American	2	0	2	0	1
Latina/o	3	4	4	7	5
Asian	0	0	0	1	0
White	3	9	9	5	2
Multi-Race/Other	0	1	0	0	0
Unknown	1	4	5	5	2
International	2	3	1	1	0
Total	11	21	21	19	10