

Sample Graphs for Chapter 4

S ED 697
Spring 2010



Types of Graphs

- **Pie Graph**

- Displays parts to a whole

- **Line Graph**

- Shows trends over time

- **Stacked Bar Graph**

- Compares fractions of whole across categories

- **Bar Graph**

- Compares values across categories

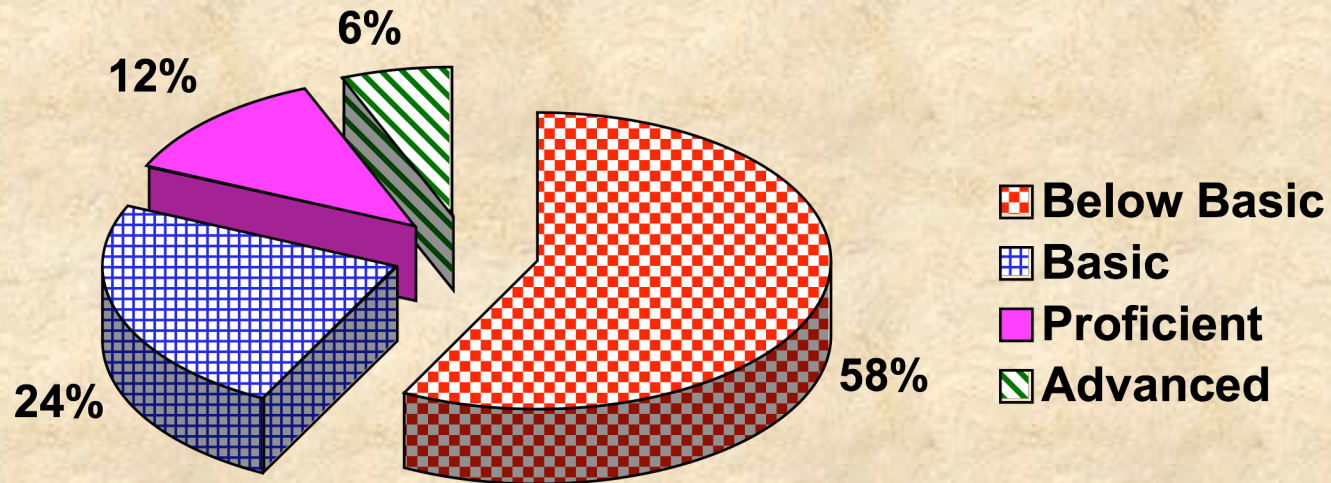
- **Histogram**

- Compares rates along intervals



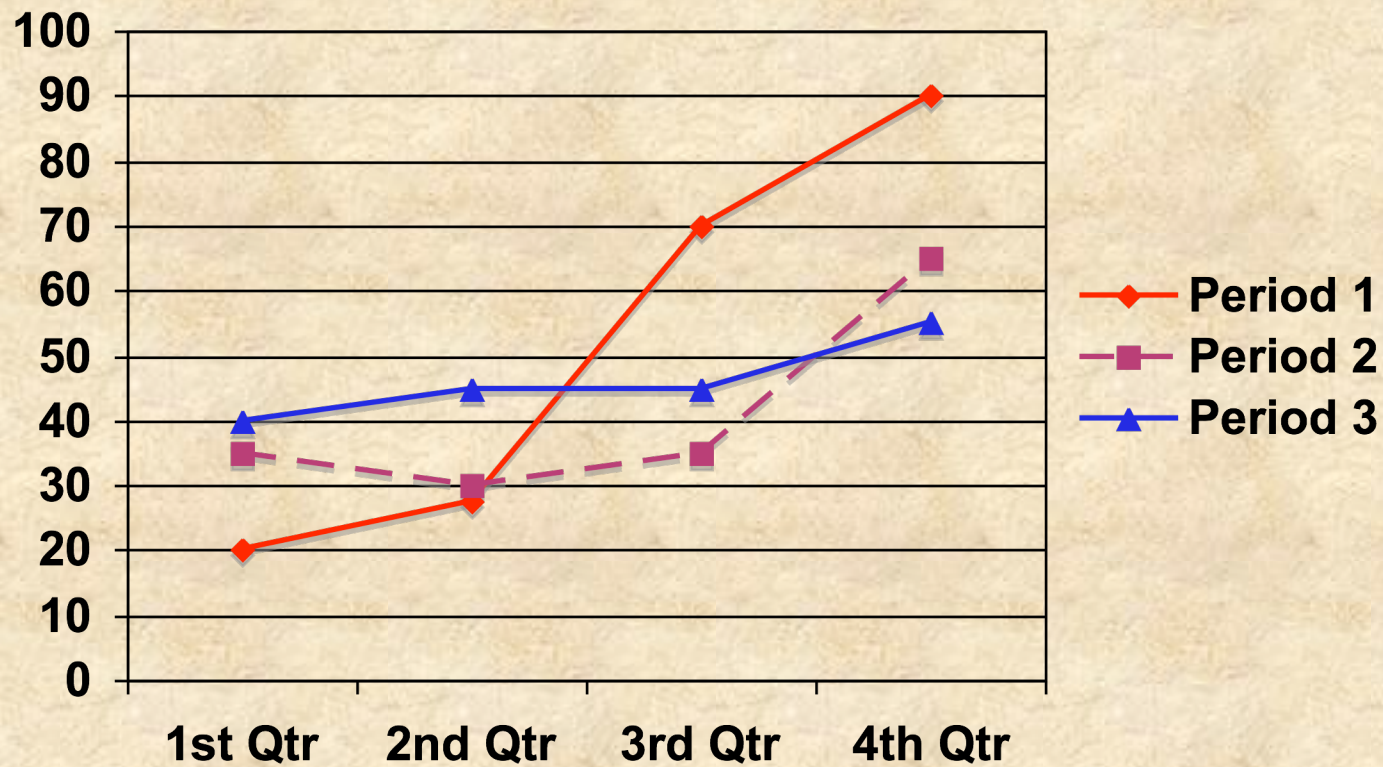
Pie Graph

Compares Parts to a Whole



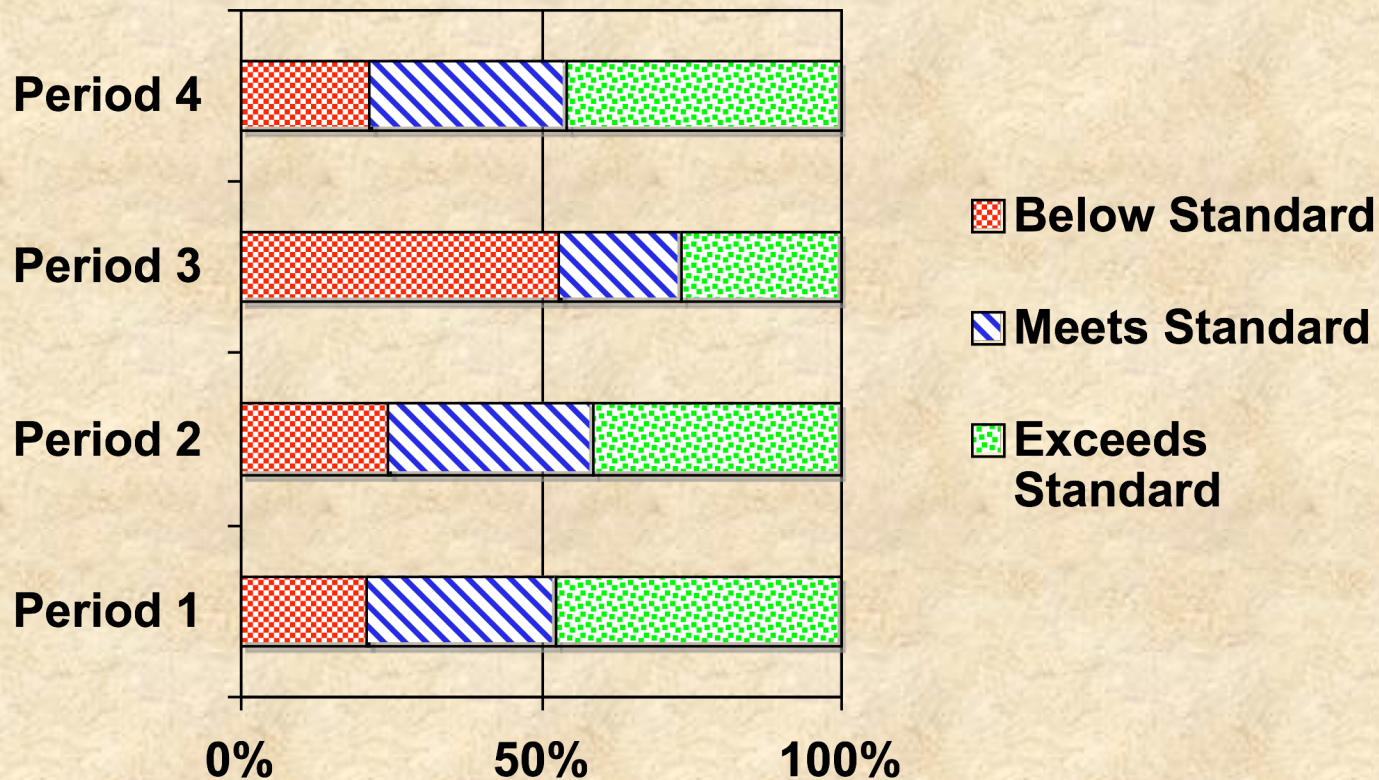
Line Graph

Shows Trends Over Time



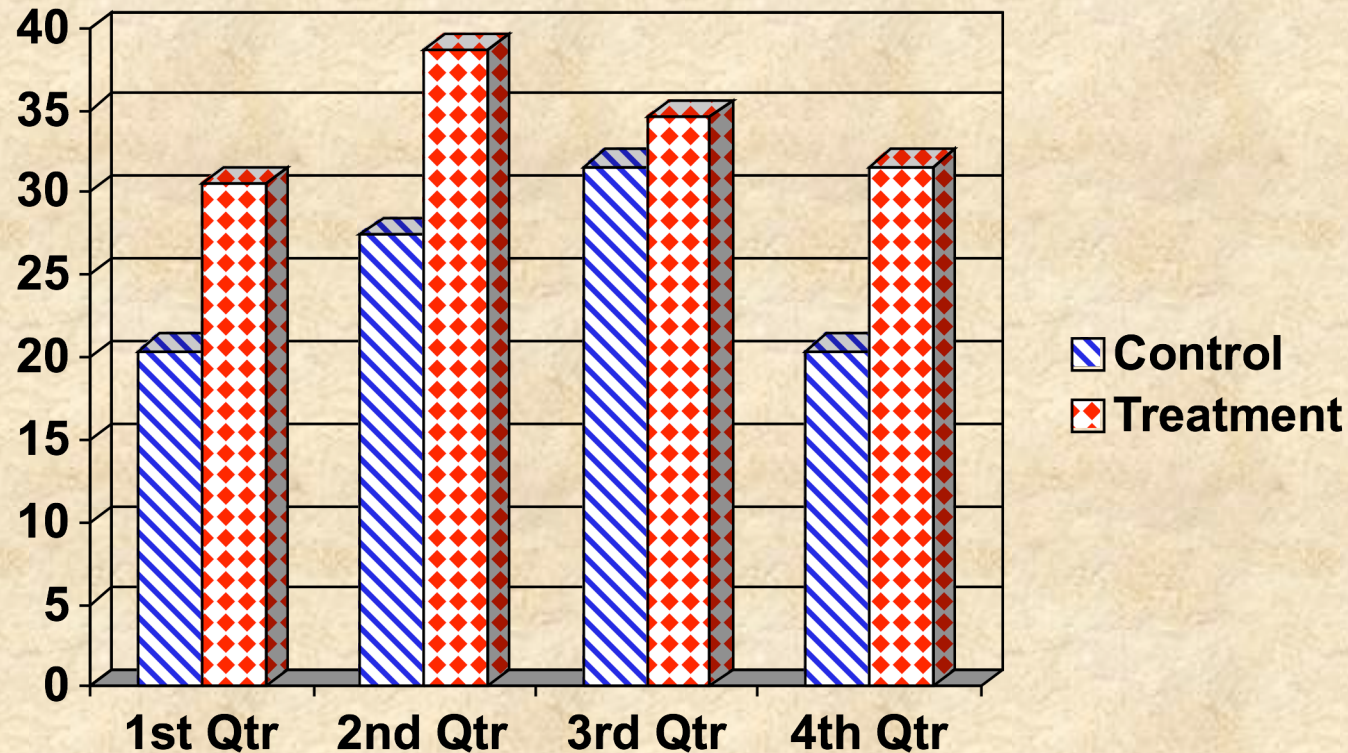
Stacked Bar Graph

Compares Fractions Across Categories



Bar Graph

Compares Values Across Categories



Histogram

Compares Rates Along Intervals

