

Fall 1997 Take-Home Quiz

1. (10 points)

Draw a complete Lewis dot structure for the following compound.

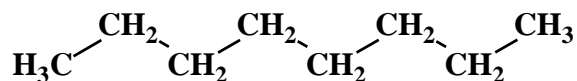


2. (10 points)

Use the VSEPR model to predict the molecular structure of boron trichloride.

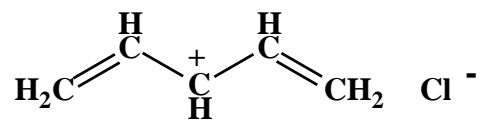
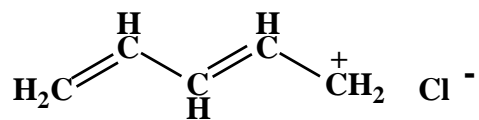
3. (10 points)

What would be a good solvent (water, a polar organic solvent, or a nonpolar organic solvent) to dissolve the following compound? State your reasoning clearly.



4. (10 points)

Are the following two structures different compounds or are they resonance structures of an identical compound?



5. (10 points)

Consider the following compound. State which bonds are covalent and which are ionic.

