

## Chemistry 333R

### Week 1 Group Questions

1. Determine whether each of the following bonds is covalent or ionic.

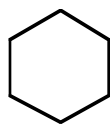
- NCl
- KCl
- SCl

2. Draw Lewis structures that correspond to each of the following condensed formulas.

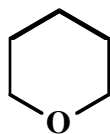
- $\text{H}_3\text{CCH}_2\text{CH}_3$
- $\text{H}_3\text{CCH}_2\text{OH}$
- $\text{H}_3\text{O}^+ \text{Cl}^-$

3. Draw Lewis structures that correspond to each of the following line-angle formulas.

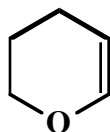
a.



b.



c.



4. Draw line-angle formulas that correspond to each of the following condensed formulas.

- $\text{H}_3\text{CCHO}$
- $\text{H}_3\text{CCHOHCHO}$
- $\text{H}_3\text{CCOCHO}$