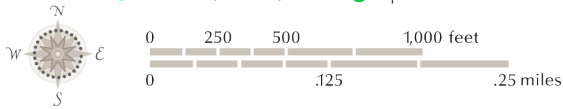


Campus Map

18111 Nordhoff Street • Northridge, CA 91330
Information: 818.677.1200 • Police Services: 818.677.2111
www.csun.edu

● Parking ● Event Sites ● Police Services
M Metered/Pay-By-Space E Employee Only P Parking
B Emergency Blue Light Phone EV Electric Vehicle Charging Station
B Matador Bicycle Compound Z Zipcar



Why do we need to drive LESS?

The average round trip commute distance for a CSUN student is 30 miles.

...

Commuting accounts for over 50% of CSUN's greenhouse gas emissions.

...

There are about 7 MILLION single occupancy drivers in Los Angeles.

...

Los Angeles ranked #2 in the INRIX Top 10 Worst Cities for Traffic in America.

...

The average LA resident was delayed 80 HOURS in 2015 because of traffic congestion.

...

Leaving your car at home 2 days a week can reduce your GHG emissions by OVER 3,000 POUNDS per year.

Travel Smart to and from CSUN



For more information on transportation services at CSUN, scan the QR code or visit: www.csun.edu/as/student-transportation-guide



CSUN | INSTITUTE FOR SUSTAINABILITY

www.csun.edu/sustainability

METRO BUS 150, 167, 240, 741

METRO BUS 167, 239

METRO BUS 166, 167, 364

Cartography: David Deis, Department of Geography - College of Social & Behavioral Sciences - Fall, 2014

Public Transportation



CSUN Shuttle

There are 3 free CSUN Shuttle Systems:

- Housing Shuttle
- Metrolink Shuttle
- VPAC Shuttle

www.csun.edu/parking/csun-shuttle-services



CSUN Transit Station

- Metro Bus Line **167** (accessing Plummer Street)
- Metro Bus Line **744**- Rapid (accessing Reseda, Ventura, & Sepulveda Blvd)
- AVTA Express Line **787** (Palmdale/Lancaster)
- CSUN Metrolink Shuttle (Northridge Metrolink Station)

www.metro.net/riding/colleges/csun

* The CSUN Transit Station is not open on weekends. Metro Line 167 stops at Reseda/Plummer, 7 days a week.



Use Metro's Next Trip



Find out when the next Metro bus is arriving at the CSUN Transit Station by using Metro's Next Trip feature. **30018** is the CSUN Transit stop number. Then use route numbers listed above.

www.metro.net/riding/nexttrip



Northridge DASH

Provides frequent and inexpensive bus service around Northridge. One way fare is only 50¢ and is free for Metrolink ticket/pass holders.

Operates Monday - Saturday.



ladottransit.com

Bicycles



The **Matador Bike Shop** offers tube replacement, handlebar, seat and brake adjustments, chain lubrication, free air, general maintenance, and much more. Users pay a small fee for parts, but the labor is free! For current locations and hours, check the Bike Shop Facebook page or call the AS Outdoor Adventures office:

@CSUNMatadorBikeShop (818) 677-4453



If you enjoy bicycling, check out the CSUN Bicycle Collective, a student club passionate about bicycles that helps run the Matador Bike Shop!

bikeclub@my.csun.edu

The **Matador Bicycle Compounds** offer protected locations to park your bike in the B3, B5, and G3 parking structures. Register your bike with the Department of Police Services in order to use these compounds and to more easily recover your bike if lost or stolen!

www.csun.edu/police/bike-security#resources

Metro buses have bike racks on the front of the bus, so you can also combine the use of Public Transit with bicycling for an easy commute!

Student Transit Passes



Metro U-Pass is a reduced fare student transit pass valid on all Metro buses and trains. This pass is good for the entire semester at a 50% off price of \$95 and is purchased through the CSUN student portal or at the AS Ticket Office.



Associated Students provides a \$15 monthly transit subsidy. You must present a valid CSUN student ID and purchase a monthly transit pass to qualify. Stop by the AS Ticket Office, located directly across from Subway in the University Student Union, or call (818) 677-2488 for more information.

www.csun.edu/as/ticket-office

Parking permit discounts:

CSUN is offering a discount for Parking Lot F10 which is located at Lassen and Lindley avenues, at the northeast end of campus. Permits for this lot are half the price of a regular permit. The lot is serviced by a campus shuttle that runs every 15 minutes.

Carpool/Rideshare



Zimride

Zimride is an online service that matches people who share similar commutes. The Zimride network is secure and restricted to CSUN students, faculty and staff, so all rideshare matches are within the CSUN community. Sign up today to find a carpool buddy in your area!

zimride

www.zimride.com/csun/user/rides

Zipcar

Rent a car on campus for just \$8.50 an hour; gas, mileage and insurance included!



join



reserve



unlock



drive

www.zipcar.com/csun



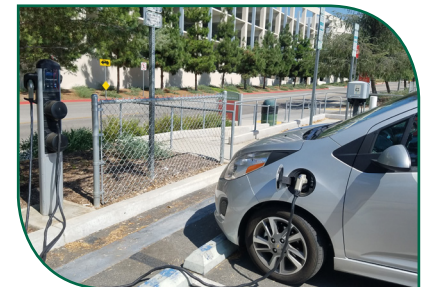
Electric Vehicles



There are 24 Electric Vehicle Charging stations located in 8 parking lots around campus:

- B2: 4 chargers (northeast corner)
- B4: 2 chargers (south side, near Information Booth)
- B5 surface lot: 2 chargers (outside north wall of structure)
- B6: 3 chargers (southwest corner)
- E5: 2 chargers (east side of Jacaranda Hall)
- G3 surface lot: 4 chargers (southwest corner)
- G9: 2 chargers (2nd level, west wall)
- F2: 3 chargers (northeast corner)
- F5: 2 DC Quick Chargers chargers (northeast corner)

*Additional DC Solar Charging Stations are also located in parking lots G1 and F10.



Charging is FREE!

Parking permits are required to park in EV charging spots, however, you may park in any lot.

There is a 4 hour maximum for all EV spaces.

See map on back for EV charging locations.

www.csun.edu/parking/electric-vehicle-charging-stations