

# IMMIGRATION BRIEFING

Spring 2009


Roopa Rawjee

Foreign Student Advisor



International and Exchange Student Center,  
CSUN



## SEVIS: Student and Exchange Visitor Information System.

-  An online database that allows USCIS and Department of Homeland Security to track all international students.

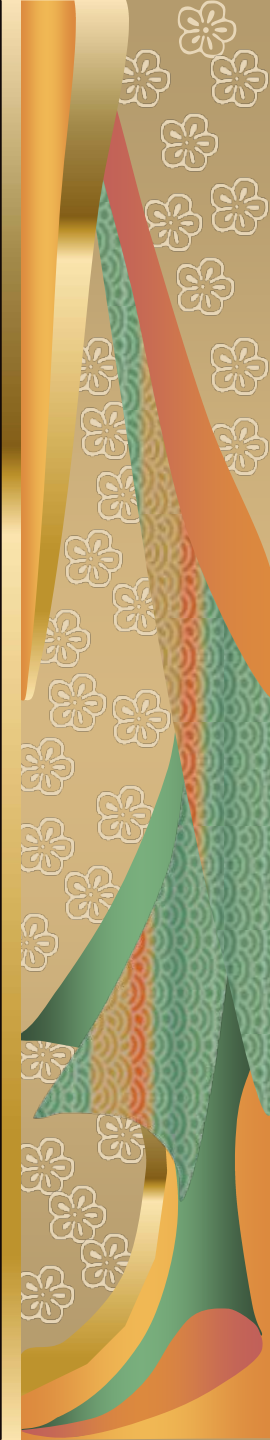
## F-1: Non-Immigrant Student Status:

-  Visa: stamp in passport obtained at the US embassy outside of the US
-  Status: reflected on I-94 and obtained by applying for Change of Status to USCIS within the US.



# MAINTENANCE OF STATUS

- Documents should always be valid. Renew prior to expiration.
  - Passport (6 months ahead) (expired visa- no problem)
  - I-20 (2 months ahead)
- Maintain academic progress
  - Undergraduate: 12 units each semester and 2.0 GPA
  - Graduate: 8 units each semester and 3.0 GPA
  - Travel Signature on I-20
  - Required for continuing students if traveling outside of the US
  - Request at least 3 weeks prior to departure
- Part-time status: Always obtain authorization
  - Medical
  - First semester-language problems
  - Improper course level placement
  - Last semester-remaining coursework
  - What do to if classes are full



## Leave of absence: Always obtain authorization

- Medical, family, personal, financial, etc.
- If possible, plan and inform prior to beginning of semester
- Provide documentation to support request
  - e.g. Doctor's letter
- You may remain in the U.S. for medical reasons.
- If taking a leave for personal reasons, you will be required to leave the US and return to home country
- I-20 will be terminated and new I-20 issued for return.

## Withdrawals:

- Within Add/Drop period- no permission required
- After Add/Drop period- with permission
- Unauthorized Withdrawal (WU)- may place you out of status





## Reinstatement:

- Leave the US and return on "Initial" I-20  
OR
- Mail application to USCIS with explanation of the reason for failure to maintain status, fees and supporting documents.



# EMPLOYMENT

## On Campus: Enroll full-time

-  Find a job
-  Maintain grades/GPA once you are a continuing student
-  Obtain work authorization (Work Permit, Clearance Form, I-9) from IESC.
-  Renew prior to expiration



# EMPLOYMENT

## Off Campus:

IMP! Must have been in F-1 status for 9 months

### Economic Hardship:

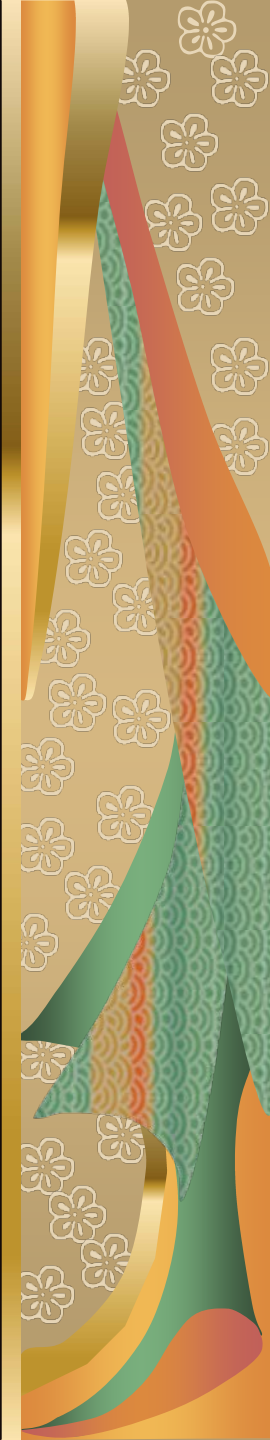
- Meet with Foreign Student Advisor
- Provide documentation of hardship e.g.: Letter from Financial Sponsor
- Obtain recommendation from IESC
- Mail application to USCIS

### Curricular Practical Training (CPT)

- Obtain Internship opportunity (job offer)
- Obtain authorization from IESC
- Dates coincide with start and end dates of classes.

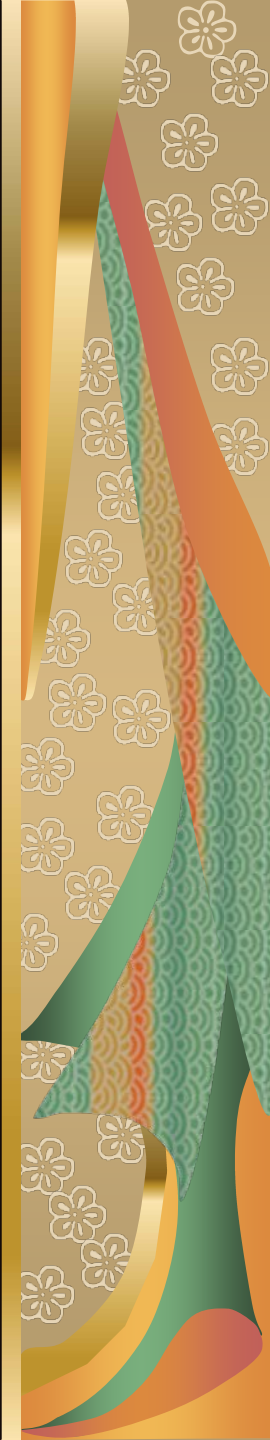
### Optional Practical Training (OPT)

- Attend workshop and begin process at beginning of final semester
- Must have met ALL graduation requirements
- Obtain recommendation from IESC
- Mail application to USCIS
- You remain an F-1 student so requirements for health insurance and travel signatures still apply!



# Completion of Studies

- You complete all coursework
- You complete OPT
- You have 60 days to
  - a – Transfer to another school
  - b – Return home
  - c – Change of Status



# Conclusion

- Questions
- Remember, you are responsible for maintaining your immigration status.
- We are here to help you.

