

ACCESSING CSUN'S ENCRYPTED WIRELESS NETWORK – WINDOWS XP REFERENCE GUIDE

INTRODUCTION

This guide gives instruction on how to setup a connection to the CSUN's encrypted wireless network (WPA2). Please note that this network is an additional resource and does not replace the current CSUN wireless network. This network provides an encrypted environment and requires a one-time login after initial setup.

STEPS TO FOLLOW - WINDOWS XP OS

Follow the steps below:

1. From the taskbar, Select **Start**.
2. Select **Control Panel**.
3. Select **Network Connections** file

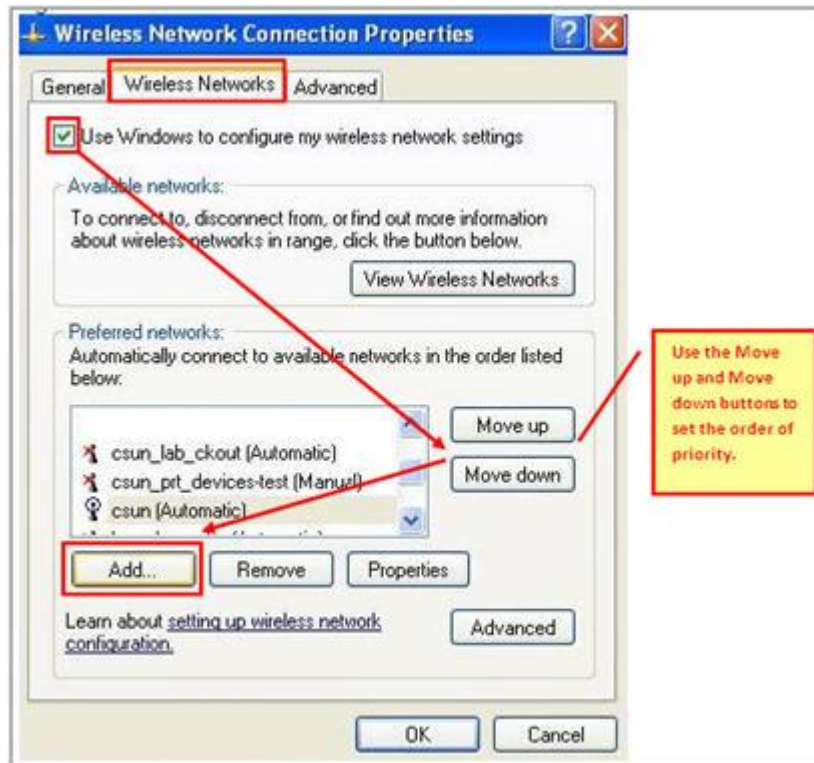


4. Right-click on **Wireless Network Connection** and select **Properties**.



5. From the **Wireless Networks** tab:

- Select the **Use Windows to configure my wireless network settings** box.
- In the **Preferred networks** section, determine the order of priority for the networks by highlighting a selection and selecting the **Move up** or **Move down** button. You may have access to more than one wireless network and this option tells your system to search for a network in the order of the priority set.
- Select the **Add** button.



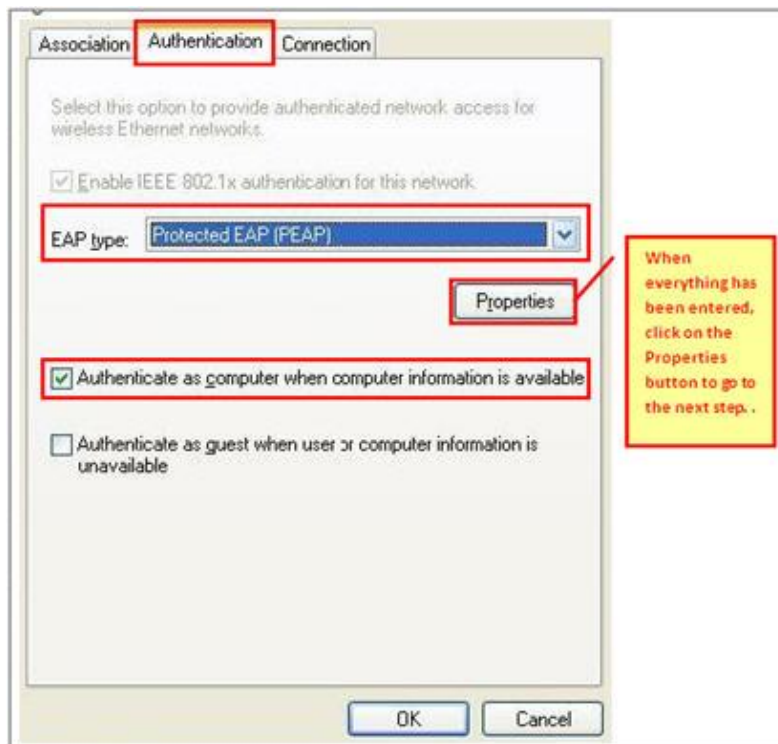
6. From the **Association** tab:

- Enter **csun_wpa2** in the **Network name** field.
- Verify that the **Connect even if this network is not broadcasting** box is selected.
- In the **Wireless network key** section, select **WPA2** from the **Network Authentication** drop-down menu.
- In the same section, select **AES** from the **Data encryption** drop-down menu.
- Select the **Authentication** tab.



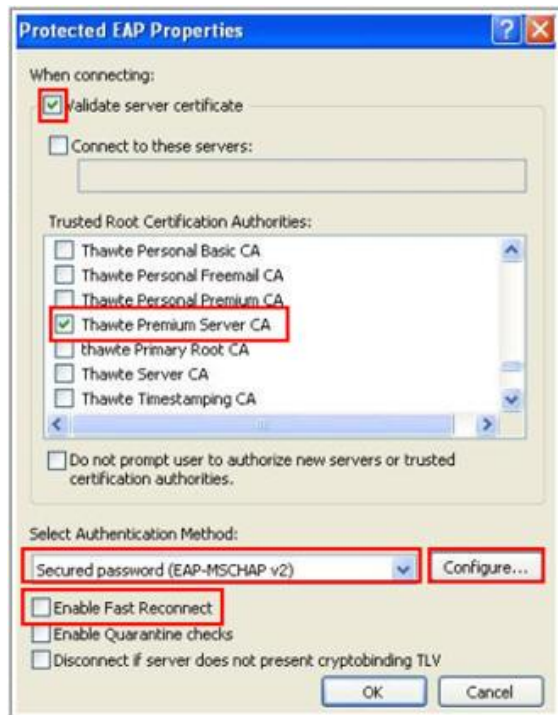
7. From the **Authentication** tab:

- Verify that the **Enable IEEE 802.1x authentication for this network** box is selected.
- Select **Protected EAP (PEAP)** from the **EAP type** drop-down menu.
- Verify that the **Authenticate as computer when computer information is available** box is selected.
- Select the **Properties** button



8. In the **Protected EAP Properties** window:

- The **Validate server certificate** box should be selected.
- In the **Trusted Root Certification Authorities** section, make sure **Thawte Premium Server CA** is selected.
- The **Do not prompt user to authorize new servers or trusted certification authorities** box should not be selected.
- In the **Select Authentication Method** section, select **Secured password (EAP-MSCHAP v2)** from the drop-down menu.
- The **Enable Fast Reconnect** box should not be selected.
- Select the **Configure** button.



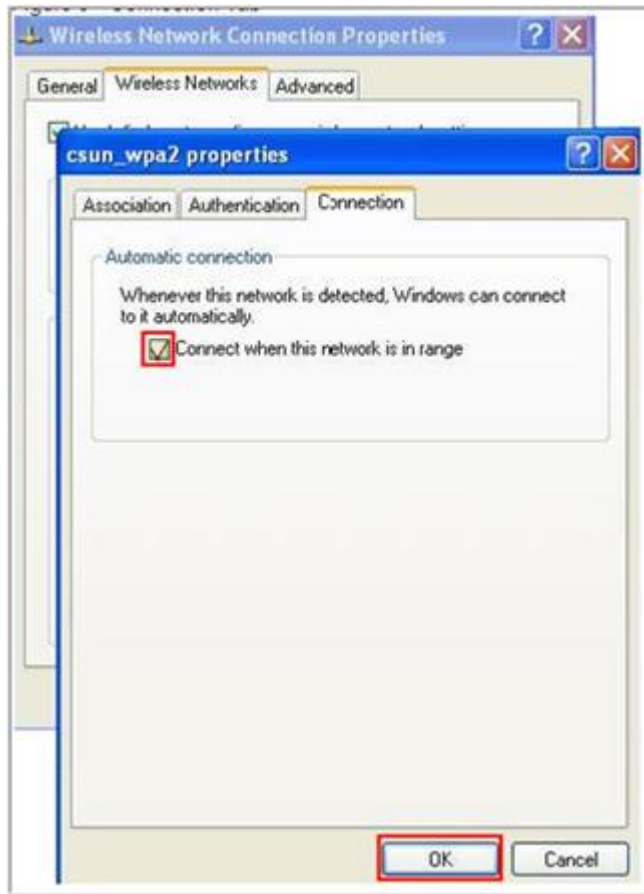
9. In the **EAP MSCHAPv2 Properties** dialog box.

- Verify that the box is not selected.
- Select the **OK** button



10. From the **Connection** tab:

- Verify that the **Connect when this network is in range** box is selected.
- Select the **OK** button.



11. After the configuration process is complete, on the bottom right of your Windows screen, you will see a pop-up balloon attempting to associate to a network. Double-click on the balloon and enter your CSUN ID and Password.

NOTE: If you change your CSUN password, you will be required to login to WPA2 by selecting this balloon.

NEED HELP?

Contact the IT Help Center by phone (818-677-1400), online at (<http://techsupport.csun.edu>) or in person in (Oviatt Library, Room 33).